

01

**CHIAVI DI MANOVRA  
WRENCHES**

**Art. 49**



UNI	ISO	DIN
6741	7738	3113

CHIAVE COMBINATA CON PROFILO CORPO SOTTILE E SPESSORE ANELLO RIDOTTO, FINITURA SATINATA CON TESTA LUCIDA, REALIZZATA IN ACCIAIO AL CROMO VANADIO.

SLIM PROFILE COMBINATION WRENCH, BODY SATIN FINISH AND POLISHED HEAD, MADE IN CHROME VANADIUM STEEL.

Art.	mm	L mm	
49.6	6	100	1
49.7	7	110	1
49.8	8	120	1
49.9	9	130	1
49.10	10	140	1
49.11	11	150	1
49.12	12	160	1
49.13	13	170	1
49.14	14	180	1
49.15	15	190	1
49.16	16	200	1
49.17	17	210	1
49.18	18	220	1
49.19	19	230	1
49.20	20	240	1
49.21	21	250	1
49.22	22	260	1
49.23	23	260	1
49.24	24	280	1
49.25	25	295	1
49.26	26	295	1
49.27	27	310	1
49.28	28	340	1
49.29	29	340	1
49.30	30	340	1
49.32	32	360	1

**Art. 49.SP9**



UNI	ISO	DIN
6741	7738	3113

SERIE DI CHIAVI SOTTILI COMBinate SATINATE CON TESTA LUCIDA IN ACCIAIO AL CROMO VANADIO SU SUPPORTO BREVETTATO DI SICUREZZA IN PLASTICA NERA mm 8-10-11-12-13-14-15-17-19.

SET OF 9 SLIM COMBINATION WRENCHES SATIN FINISH POLISHED HEAD, IN CHROME VANADIUM STEEL SUPPLIED WITH SAFETY PLASTIC HOLDER mm 8-10-11-12-13-14-15-17-19

Art.	mm	L mm	
49.SP9	---	---	1

**Art. 49.RP9**

RICAMBIO SUPPORTO DI SICUREZZA IN PLASTICA NERA PER ART. 49.SP9.

PATENTED SAFETY PLASTIC HOLDER ONLY FOR ART. 49.SP9

Art.	mm	L mm	
49.RP9	---	---	1

**Art. 49.S15**



UNI	ISO	DIN
6741	7738	3113

SERIE DI CHIAVI SOTTILI COMBinate SATINATE CON TESTA LUCIDA IN ACCIAIO AL CROMO VANADIO MISURE mm 6-7-8-9-10-11-12-13-14-15-16-17-19-22-24.

SET OF 15 SLIM COMBINATION WRENCHES SATIN FINISH POLISHED HEAD, IN CHROME VANADIUM STEEL mm 6-7-8-9-10-11-12-13-14-15-16-17-19-22-24

Art.	mm	L mm	
49.S15	---	---	1

**Art. 49.S11**



UNI	ISO	DIN
6741	7738	3113

SERIE COMPLEMENTARE PER ART. 49.S15 DI CHIAVI SOTTILI COMBinate SATINATE CON TESTA LUCIDA IN ACCIAIO AL CROMO VANADIO MISURE mm 18-20-21-23-25-26-27-28-29-30-32.

COMPLEMENTARY SET FOR ART. 49.S15 OF 11 SLIM COMBINATION WRENCHES SATIN FINISH POLISHED HEAD, IN CHROME VANADIUM STEEL mm 18-20-21-23-25-26-27-28-29-30-32

Art.	mm	L mm	
49.S11	---	---	1

**Art. 50**



UNI	ISO	DIN
6741	3318	3113

CHIAVE COMBINATA CON PROFILO DEL CORPO SOTTILE E SPESSORE DELL'ANELLO RIDOTTO, FINITURA ACCURATA IN MICROSATINATURA, REALIZZATA IN ACCIAIO AL CROMO VANADIO.

COMBINATION WRENCH WITH SLIM PROFILE BODY, ACCURATE MICROSATIN FINISH, MADE IN CHROME VANADIUM STEEL.

Art.	mm	L mm	
50.5,5	5,5	93	1
50.6	6	100	1
50.7	7	110	1
50.8	8	120	1
50.9	9	130	1
50.10	10	140	1
50.11	11	150	1
50.12	12	160	1
50.13	13	170	1
50.14	14	180	1
50.15	15	190	1
50.16	16	200	1
50.17	17	210	1
50.18	18	220	1
50.19	19	230	1
50.20	20	240	1
50.21	21	250	1
50.22	22	260	1
50.23	23	260	1
50.24	24	280	1
50.25	25	295	1
50.26	26	295	1
50.27	27	310	1
50.28	28	340	1
50.29	29	340	1
50.30	30	340	1
50.32	32	360	1
50.34	34	380	1
50.35	35	410	1
50.36	36	410	1
50.38	38	430	1
50.41	41	460	1

**Art. 50.S17**



UNI	ISO	DIN
6741	3318	3113

SERIE N° 17 CHIAVI COMBinate MICROSATINATE IN ACCIAIO AL CROMO VANADIO mm 6-7-8-9-10-11-12-13-14-15-16-17-18-19-20-21-22.

SET OF 17 COMBINATION WRENCHES MICROSATIN FINISH, IN CHROME VANADIUM STEEL mm 6-7-8-9-10-11-12-13-14-15-16-17-18-19-20-21-22

Art.	mm	L mm	
50.S17	---	---	1

**Art. 50.S9GD**



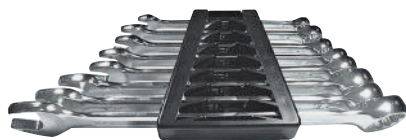
UNI	ISO	DIN
6741	3318	3113

SERIE N°9 CHIAVI COMBINATE GRANDI DIMENSIONI IN ACCIAIO AL CROMO VANADIO mm 23-24-25-26-27-28-29-30-32.

SET OF 9 COMBINATION WRENCHES MICROSATIN FINISH, IN CHROME VANADIUM STEEL mm 23-24-25-26-27-28-29-30-32

Art.	mm	L mm	
50.S9GD	---	---	1

**Art. 50.SP8**



UNI	ISO	DIN
6741	3318	3113

SERIE N°8 CHIAVI COMBINATE MICROSATINATE IN ACCIAIO AL CROMO VANADIO SU SUPPORTO BREVETTATO DI SICUREZZA IN PLASTICA NERA mm 8-10-11-13-14-17-19-22.

SET OF 8 COMBINATION WRENCHES MICROSATIN FINISH, IN CHROME VANADIUM STEEL SUPPLIED WITH PATENTED SAFETY PLASTIC HOLDER mm 8-10-11-13-14-17-19-22

Art.	mm	L mm	
50.SP8	---	---	1

**Art. 50.RP8**

RICAMBIO SUPPORTO DI SICUREZZA IN PLASTICA NERA PER ART. 50.SP8.

PATENTED SAFETY PLASTIC HOLDER ONLY FOR ART. 50.SP8

Art.	mm	L mm	
50.RP8	---	---	1

**Art. 50.BN17**



UNI	ISO	DIN
---	---	---

BUSTA IN TESSUTO NYLON CON DOPPIE CUCITURE ED ANELLI IN ACCIAIO PER SERIE DI 17 CHIAVI COMBINATE (Art. 50.S17) mm 6-7-8-9-10-11-12-13-14-15-16-17-18-19-20-21-22.

TEXTILE NYLON POUCH WITH DOUBLE SEWING AND STEEL RINGS FOR SET OF 17 COMBINATION WRENCHES (Art. 50.S17) mm 6-7-8-9-10-11-12-13-14-15-16-17-18-19-20-21-22

Art.	mm	L mm	
50.BN17	---	---	1

**Art. 50.BN26**



UNI	ISO	DIN
---	---	---

BUSTA IN TESSUTO NYLON CON DOPPIE CUCITURE ED ANELLI IN ACCIAIO PER SERIE DI 26 CHIAVI COMBINATE (Art. 50.S17 + Art. 50.S9GD) mm 6-7-8-9-10-11-12-13-14-15-16-17-18-19-20-21-22-23-24-25-26-27-28-29-30-32.

TEXTILE NYLON POUCH WITH DOUBLE SEWING AND STEEL RINGS FOR SET OF 26 COMBINATION WRENCHES (Art. 50.S17 + Art. 50.S9GD) mm 6-7-8-9-10-11-12-13-14-15-16-17-18-19-20-21-22-23-24-25-26-27-28-29-30-32

Art.	mm	L mm	
50.BN26	---	---	1

**Art. 51**



UNI	ISO	DIN
---	7738/3318	---

CHIAVE COMBINATA MICROSATINATA A CRICCHETTO REVERSIBILE DA 72 DENTI, LEVA DI MANOVRA RINFORZATA ANTIURTO, REALIZZATA IN ACCIAIO AL CROMO VANADIO.

COMBINATION WRENCH WITH REVERSIBLE RATCHET 72 TEETH, ENFORCED OPERATING SHAFT, MICROSATIN FINISH, MADE IN CHROME VANADIUM STEEL

Art.	mm	L mm	
51.6	6	112	1
51.7	7	124	1
51.8	8	136	1
51.9	9	143	1
51.10	10	159	1
51.11	11	168	1
51.12	12	174	1
51.13	13	180	1

Art.	mm	L mm	
51.14	14	190	1
51.15	15	200	1
51.16	16	216	1
51.17	17	233	1
51.18	18	239	1
51.19	19	248	1
51.22	22	284	1

**Art. 51.S15**



UNI	ISO	DIN
---	7738/3318	---

SERIE DI 15 CHIAVI COMBINATE MICROSATINATE A CRICCHETTO REVERSIBILE DA 72 DENTI IN ACCIAIO AL CROMO VANADIO mm 6-7-8-9-10-11-12-13-14-15-16-17-18-19-22.

SET OF 15 COMBINATION WRENCHES WITH REVERSIBLE RATCHET 72 TEETH MICROSATIN FINISH, IN CHROME VANADIUM STEEL mm 6-7-8-9-10-11-12-13-14-15-16-17-18-19-22

Art.	mm	L mm	
51.S15	---	---	1

**Art. 51.SP5**



UNI	ISO	DIN
---	7738/3318	---

SERIE DI 5 CHIAVI COMBINATE MICROSATINATE A CRICCHETTO REVERSIBILE DA 72 DENTI IN ACCIAIO AL CROMO VANADIO SU SUPPORTO BREVETTATO DI SICUREZZA IN PLASTICA NERA mm 8-10-13-17-19.

SET OF 5 COMBINATION WRENCHES WITH REVERSIBLE RATCHET 72 TEETH, MICROSATIN FINISH IN CHROME VANADIUM STEEL SUPPLIED WITH PATENTED SAFETY PLASTIC HOLDER mm 8-10-13-17-19

Art.	mm	L mm	
51.SP5	---	---	1

**Art. 51.RP5**

RICAMBIO SUPPORTO DI SICUREZZA IN PLASTICA NERA PER ART. 51.SP5 .

PATENTED SAFETY PLASTIC HOLDER ONLY FOR ART. 51.SP5

Art.	mm	L mm	
51.RP5	---	---	1

**Art. 52**



UNI	ISO	DIN
6740	10104	838

CHIAVE POLIGONALE DOPPIA A 75° MICROSATINATA IN ACCIAIO AL CROMO VANADIO.

DOUBLE ENDED 75° OFFSET RING WRENCH MICROSATIN FINISH, IN CHROME VANADIUM STEEL

Art.	mm	L mm	
52.6X7	6x7	170	1
52.8X9	8x9	182	1
52.10X11	10x11	197	1
52.12X13	12x13	213	1
52.14X15	14x15	228	1
52.16X17	16x17	246	1
52.18X19	18x19	265	1
52.20X22	20x22	288	1
52.21X23	21x23	310	1
52.24X26	24x26	330	1
52.25X28	25x28	348	1
52.27X29	27x29	372	1
52.30X32	30x32	372	1

**Art. 52.S9**



UNI	ISO	DIN
6740	10104	838

SERIE 9 CHIAVI POLIGONALI DOPPIE A 75° MICROSATINATE mm 6X7-8X9-10X11-12X13-14X15-16X17-18X19-20X22-21X23.

SET OF 9 DOUBLE ENDED 75° OFFSET RING WRENCHES MICROSATIN FINISH, IN CHROME VANADIUM STEEL mm 6X7-8X9-10X11-12X13-14X15-16X17-18X19-20X22-21X23

Art.	mm	L mm	
52.S9	---	---	1

**Art. 52.S13**



UNI	ISO	DIN
6740	10104	838

SERIE 13 CHIAVI POLIGONALI DOPPIE A 75° MICROSATINATE mm 6X7-8X9-10X11-12X13-14X15-16X17-18X19-20X22-21X23-24X26-25X28-27X29-30X32.

SET OF 13 DOUBLE ENDED 75° OFFSET RING WRENCHES

MICROSATIN FINISH, IN CHROME VANADIUM STEEL mm 6X7-8X9-10X11-12X13-14X15-16X17-18X19-20X22-21X23-24X27-25X28-30X32

Art.	mm	L mm	
52.S13	---	---	1

**Art. 52.BN13**



UNI	ISO	DIN
---	---	---

BUSTA IN TESSUTO NYLON CON DOPPIE CUCITURE ED ANELLI IN ACCIAIO PER SERIE (Art. 52.S13 )13 CHIAVI POLIGONALI IN ACCIAIO AL CROMO VANADIO mm 6X7-8X9-10X11-12X13-14X15-16X17-18X19-20X22-21X23-24X26-25X28-27X29-30X32.

TEXTILE NYLON POUCH WITH DOUBLE SEWING AND STEEL RINGS FOR SET OF 13 DOUBLE ENDED OFFSET RING WRENCHES (Art. 52.S13) mm 6X7-8X9-10X11-12X13-14X15-16X17-18X19-20X22-21X23-24X26-25X28-27X29-30X32

Art.	mm	L mm	
52.BN13	---	---	1

**Art. 52.21X22**



UNI	ISO	DIN
---	---	---

CHIAVE POLIGONALE DOPPIA A 75° PER PONTEGGI, FINITURA SATINATA, IN ACCIAIO AL CROMO VANADIO, mm 21X22.

DOUBLE ENDED 75° OFFSET RING WRENCH FOR SCAFFOLDS, SATIN FINISH, IN CHROME VANADIUM STEEL, mm 21X22

Art.	mm	L mm	€	
52.21X22	21x22	290	9,95	1

**Art. 53**



UNI	ISO	DIN
6736	10102	3110

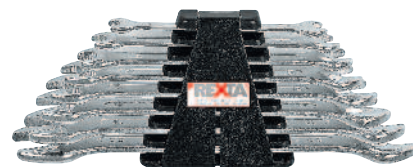
CHIAVE A DOPPIA FORCHETTA DOPPIA TESTA LUCIDA IN ACCIAIO AL CROMO VANADIO.

DOUBLE ENDED OPEN JAW WRENCH SATIN FINISH POLISHED HEAD, IN CHROME VANADIUM STEEL

Art.	mm	L mm	
53.4X5	4x5	112	1
53.5,5X7	5,5x7	122	1

Art.	mm	L mm	
53.6X7	6x7	122	1
53.8X9	8x9	140	1
53.8X10	8x10	140	1
53.10X11	10x11	156	1
53.12X13	12x13	172	1
53.14X15	14x15	188	1
53.13X17	13x17	188	1
53.16X17	16x17	204	1
53.17X19	17x19	220	1
53.18X19	18x19	220	1
53.19X22	19x22	234	1
53.20X22	20x22	234	1
53.21X23	21x23	247	1
53.24X26	24x26	266	1
53.24X27	24x27	266	1
53.25X28	25x28	285	1
53.27X29	27x29	302	1
53.30X32	30x32	302	1
53.32X36	32x36	319	1
53.34X36	34x36	319	1
53.36X41	36x41	380	1
53.41X46	41x46	415	1
53.46X50	46x50	465	1

**Art. 53.SP8**



UNI	ISO	DIN
6736	10102	3110

SERIE DI 8 CHIAVI A DOPPIA FORCHETTA DOPPIA TESTA LUCIDA IN ACCIAIO AL CROMO VANADIO SU SUPPORTO BREVETTATO DI SICUREZZA IN PLASTICA NERA mm 6X7-8X9-10X11-12X13-14X15-16X17-18X19-20X22.

SET OF 8 DOUBLE ENDED OPEN JAW WRENCHES SATIN FINISH POLISHED HEAD, IN CHROME VANADIUM STEEL, SUPPLIED WITH SAFETY PLASTIC HOLDER mm 6X7-8X9-10X11-12X13-14X15-16X17-18X19-20X22

Art.	mm	L mm	
53.SP8	---	---	1

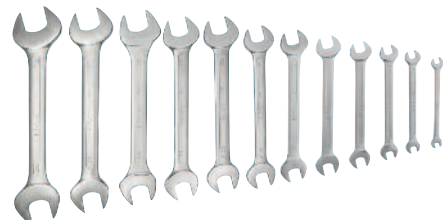
**Art. 53.RP8**

RICAMBIO SUPPORTO DI SICUREZZA BREVETTATO IN PLASTICA NERA PER ART.53.SP8 .

PATENTED SAFETY PLASTIC HOLDER ONLY FOR ART. 53.SP8

Art.	mm	L mm	
53.RP8	---	---	1

**Art. 53.S12**



UNI	ISO	DIN	
6736	10102	3110	
SERIE DI CHIAVI A DOPPIA FORCHETTA DOPPIA TESTA LUCIDA mm 6X7-8X9-10X11-12X13-14X15-16X17-18X19-20X22-21X23-24X27-25X28-30X32.			
SET OF 12 DOUBLE ENDED OPEN JAW WRENCHES SATIN FINISH POLISHED HEAD, IN CHROME VANADIUM STEEL, SUPPLIED WITH PLASTIC STAND mm 6X7-8X9-10X11-12X13-14X15-16X17-18X19-20X22-21X23-24X27-25X28-30X32			
Art.	mm	L mm	
53.S12	---	---	1

**Art. 53.BN12**



UNI	ISO	DIN	
6736	3318	3110	
BUSTA IN TESSUTO NYLON CON DOPPIE CUCITURE ED ANELLI IN ACCIAIO PER SERIE 12 CHIAVI A DOPPIA FORCHETTA (Art. 53.S12) mm 6X7-8X9-10X11-12X13-14X15-16X17-18X19-20X22-21X23-24X27-25X28-30X32.			
TEXTILE NYLON POUCH WITH DOUBLE SEWING AND STEEL RINGS FOR SET OF 12 DOUBLE ENDED OPEN JAW WRENCHES (Art. 53.S12) mm 6X7-8X9-10X11-12X13-14X15-16X17-18X19-20X22-21X23-24X27-25X28-30X32			
Art.	mm	L mm	
53.BN12	---	---	1

**Art. 54**



UNI	ISO	DIN	
---	2236	---	
CHIAVE A PIPA PASSANTE ESAGONALE/POLIGONALE CON FINITURA LUCIDA IN ACCIAIO AL CROMO VANADIO.			
HOLLOW OFFSET PIPE WRENCH MIRROR FINISH, IN CHROME VANADIUM STEEL			
Art.	mm	L mm	
54.6X6	6x6	100	1
54.7X7	7x7	100	1
54.8X8	8x8	120	1
54.9X9	9x9	120	1
54.10X10	10x10	127	1
54.11X11	11x11	127	1
54.12X12	12x12	135	1
54.13X13	13x13	140	1
54.14X14	14x14	154	1
54.15X15	15x15	160	1

Art.	mm	L mm	
54.16X16	16x16	185	1
54.17X17	17x17	185	1
54.18X18	18x18	195	1
54.19X19	19x19	195	1
54.20X20	20x20	205	1
54.21X21	21x21	205	1
54.22X22	22x22	225	1
54.23X23	23x23	225	1
54.24X24	24x24	225	1
54.25X25	25x25	225	1
54.26X26	26x26	260	1
54.27X27	27x27	260	1
54.28X28	28x28	270	1
54.30X30	30x30	295	1
54.32X32	32x32	305	1

**Art. 54.S7**



UNI	ISO	DIN	
---	2236	---	
SERIE DI SETTE CHIAVI A PIPA PASSANTI ESAGONALI/POLIGONALI CON FINITURA LUCIDA IN ACCIAIO AL CROMO VANADIO ART. 54 mm 8,10,11,12,13,17,19.			
SET OF 7 HOLLOW OFFSET PIPE WRENCHES MIRROR FINISH, IN CHROME VANADIUM STEEL ART. 54 mm 8,10,11,12,13,17,19			
Art.	mm	L mm	
54.S7	---	---	1

**Art. 54.S15**



UNI	ISO	DIN	
---	2236	---	
SERIE DI 15 CHIAVI A PIPA PASSANTI ESAGONALI/POLIGONALI CON FINITURA LUCIDA IN ACCIAIO AL CROMO VANADIO ART. 54 mm 6,7,8,10,11,12,13,14,15,16,17,19,20,21,22.			
SET OF 15 HOLLOW OFFSET PIPE WRENCHES MIRROR FINISH, IN CHROME VANADIUM STEEL ART. 54 mm 6,7,8,10,11,12,13,14,15,16,17,19,20,21,22.			
Art.	mm	L mm	
54.S15	---	---	1

**Art. 55**



UNI	ISO	DIN	
---	---	3118	
CHIAVE ESAGONALE PER RACCORDI IN ACCIAIO AL CROMO VANADIO, TESTE INCLINATE DI 15° PER UNA MAGGIORE ACCESSIBILITA', TRIPLA NICHELATURA E CROMATURA PER UNA PROTEZIONE SPECIALE CONRO LA CORROSIONE, FINITURA LUCIDA.			
BIHEXAGON WRENCH FOR CONNECTORS, IN CHROME VANADIUM STEEL, BENT HEADS AT 15°, TRIPLE NICHEL PLATING PLUS CHROME PLATING FOR SPECIAL PROTECTION FROM RUST, MIRROR FINISH			
Art.	mm	L mm	
55.8X10	8x10	140	1
55.10X11	10x11	153	1
55.11X13	11x13	174	1
55.12X14	12x14	174	1
55.17X19	17x19	212	1
55.19X22	19x22	228	1
55.22X24	22x24	242	1
55.24X27	24x27	259	1
55.30X32	30x32	297	1
55.36X41	36x41	317	1

**Art. 55.SB5**



UNI	ISO	DIN	
---	---	3118	
SERIE DI CHIAVI PER RACCORDI IN ACCIAIO AL CROMO VANADIO, TESTE INCLINATE DI 15° PER UNA MAGGIORE ACCESSIBILITA', TRIPLA NICHELATURA E CROMATURA PER PROTEZIONE SPECIALE CONTRO LA CORROSIONE, FINITURA LUCIDA, FORNITE IN BUSTA IN TESSUTO DI NYLON, MISURE mm 8X10,10X11,11X13,12X14,17X19.			
SET OF BIHEXAGON WRENCHES FOR CONNECTORS, IN CHROME VANADIUM STEEL, BENT HEADS AT 15°, TRIPLE NICHEL PLATING PLUS CHROME PLATING FOR SPECIAL PROTECTION FROM CORROSION, MIRROR FINISH, SUPPLIED IN WOVEN NYLON POUCH, SIZES mm 8X10,10X11,11X13,12X14,17X19			
Art.	mm	L mm	
55.SB5	---	---	1

**Art. 56**



UNI	ISO	DIN
---	---	---

CHIAVE TORX® DIRITTA A DOPPIO ANELLO IN ACCIAIO AL CROMO VANADIO FINITURA LUCIDA.

STRAIGHT TORX® WRENCH WITH DOUBLE RING, MIRROR FINISH, MADE IN CHROME VANADIUM STEEL

Art.	♣	L mm	📦
56.6X8	E 6x8	112	1
56.10X12	E 10x12	140	1
56.14X18	E 14x18	180	1
56.20X24	E 20x24	224	1

**Art. 56.SB4**



UNI	ISO	DIN
---	---	---

SERIE DI 4 CHIAVI TORX® DIRITTA A DOPPIO ANELLO IN ACCIAIO AL CROMO VANADIO FINITURA LUCIDA IN BUSTA DI NYLON, MISURE E6XE8,E10XE12,E14XE18,E20XE24.

SET OF 4 STRAIGHT TORX® WRENCHES WITH DOUBLE RING IN CHROME VANADIUM STEEL MIRROR FINISH IN NYLON POUCH, SIZES E6XE8,E10XE12,E14XE18,E20XE24

Art.	♣	L mm	📦
56.SB4	---	---	1

**Art. 57**



UNI	ISO	DIN
---	7738/3318	---

CHIAVE COMBINATA A CRICCHETTO SNODATO DA 72 DENTI, FINITURA MICROSATINATA, REALIZZATA IN ACCIAIO AL CROMO VANADIO.

COMBINATION WRENCH WITH FLEXIBLE RATCHET 72 TEETH MICROSATIN FINISH, MADE IN CHROME VANADIUM STEEL

Art.	♣	L mm	📦
57.8	8	136	1
57.9	9	143	1
57.10	10	160	1

Art.	♣	L mm	📦
57.11	11	168	1
57.12	12	174	1
57.13	13	180	1
57.14	14	193	1
57.15	15	200	1
57.16	16	216	1
57.17	17	233	1
57.18	18	239	1
57.19	19	250	1

**Art. 57.SP5**



UNI	ISO	DIN
---	7738/3318	---

SERIE DI 5 CHIAVI COMBINATE MICROSATINATE CON CRICCHETTO SNODATO DA 72 DENTI IN ACCIAIO AL CROMO VANADIO SU SUPPORTO BREVETTATO DI SICUREZZA IN PLASTICA NERA mm 8-10-13-17-19.

SET OF 5 COMBINATION WRENCHES WITH FLEXIBLE RATCHET 72 TEETH, MICROSATIN FINISH IN CHROME VANADIUM STEEL SUPPLIED WITH PATENTED SAFETY PLASTIC HOLDER mm 8-10-13-17-19

Art.	♣	L mm	📦
57.SP5	---	---	1

**Art. 57.RP5**

RICAMBIO SUPPORTO DI SICUREZZA IN PLASTICA NERA PER ART. 57.SP5 .

PATENTED SAFETY PLASTIC HOLDER ONLY FOR ART. 57.SP5

Art.	♣	L mm	📦
57.RP5	---	---	1

**Art. 58**



UNI	ISO	DIN
---	3318	---

CHIAVE POLIGONALE DOPPIA RICURVA MICROSATINATA IN ACCIAIO AL CROMO VANADIO.

HALF MOON OFFSET WRENCH MICROSATIN FINISH, IN CHROME VANADIUM STEEL

Art.	♣	L mm	📦
58.10X12	10x12	143	1
58.11X13	11x13	165	1
58.14X17	14x17	190	1
58.16X18	16x18	220	1
58.19X22	19x22	253	1

**Art. 59**



UNI	ISO	DIN
---	---	---

CHIAVE PER TUBI E RACCORDI A CRICCHETTO APERTO, GANASCE FORGIATE IN ACCIAIO AL CROMO VANADIO CORPO IN LAMIERA IMBUTITA.

RATCHET WRENCH FOR CONNECTORS JAWS IN CHROME VANADIUM STEEL BODY IN SHEET STEEL

Art.	♣	L mm	📦
59.10	10	138	1
59.11	11	138	1
59.13	13	138	1
59.17	17	184	1
59.19	19	184	1
59.22	22	236	1

**Art. 60**



UNI	ISO	DIN
6734	---	3117

CHIAVE GRADUATA REGOLABILE IN ACCIAIO AL CROMO VANADIO, GRANDE APERTURA.

ADJUSTABLE WRENCH IN CHROME VANADIUM STEEL WITH SCALE IN MILLIMETRES LARGE OPEN JAW

Art.	♣	L mm	📦
60.110	17	110	1
60.150	24	150	1
60.200	29	200	1
60.250	33	250	1
60.300	38	300	1
60.380	50	380	1
60.460	60	460	1

**Art. 70**



UNI	ISO	DIN
---	---	---

CHIAVE A SETTORE SNODATA CON NASELLO QUADRO IN ACCIAIO AL CROMO VANADIO.

ADJUSTABLE HOOK WRENCH WITH SQUARE PIN, IN CHROME VANADIUM STEEL AND SATIN FINISH

Art.	mm	L mm	
70.15/35	15/35	168	1
70.35/50	35/50	202	1
70.50/80	50/80	280	1
70.80/120	80/120	345	1
70.120/180	120/180	492	1

**Art. 71**



UNI ISO DIN

--- --- ---

CHIAVE A SETTORE SNODATA CON NASELLO TONDO IN ACCIAIO AL CROMO VANADIO.

ADJUSTABLE HOOK WRENCH WITH SQUARE PIN, IN CHROME VANADIUM STEEL AND SATIN FINISH

Art.	mm	L mm	
71.15/35	15/35	168	1
71.35/50	35/50	202	1
71.50/80	50/80	280	1
71.80/120	80/120	345	1
71.120/180	120/180	492	1

**Art. 70**



UNI ISO DIN

--- --- ---

CHIAVE A SETTORE SNODATA CON NASELLO QUADRO IN ACCIAIO AL CROMO VANADIO.

ADJUSTABLE HOOK WRENCH WITH SQUARE PIN, IN CHROME VANADIUM STEEL AND SATIN FINISH

Art.	mm	L mm	
70.2	3/4" - 2"	202	1
70.3	1+1/4" - 3"	280	1
70.4E3/4	2 - 4+3/4"	345	1
70.6E1/4	4+1/2" - 6+1/4"	492	1

**Art. 81**



UNI ISO DIN

6738 --- 7444

CHIAVE A PERCUSSIONE POLIGONALE IN ACCIAIO SPECIALE AL CROMO VANADIO, FINITURA ZINCO-CROMATA.

SLOGGING BIHEXAGON RING WRENCH, MADE IN CHROME VANADIUM STEEL, ZINC-CHROME PLATED FINISH

Art.	mm	L mm	
81.24	24	165	1
81.27	27	180	1
81.30	30	190	1
81.32	32	190	1
81.36	36	205	1
81.41	41	230	1
81.46	46	240	1
81.50	50	255	1
81.55	55	270	1
81.60	60	280	1
81.65	65	300	1
81.70	70	330	1
81.75	75	330	1
81.80	80	360	1
81.85	85	360	1

**Art. 82**



UNI ISO DIN

--- --- 894

CHIAVE A FORCHETTA SINGOLA GRANDI SFORZI CON IMPUGNATURA FORATA, IN ACCIAIO AL CROMO VANADIO, FINITURA ZINCO-CROMATA.

HEAVY DUTY SINGLE OPEN JAW WRENCH IN CHROME VANADIUM STEEL, ZINC-CHROME PLATED FINISH

Art.	mm	L mm	
82.13	13	130	1
82.14	14	140	1
82.15	15	150	1
82.16	16	160	1
82.17	17	160	1
82.18	18	170	1
82.19	19	180	1
82.20	20	180	1
82.21	21	180	1
82.22	22	200	1
82.23	23	220	1
82.24	24	220	1
82.25	25	225	1
82.26	26	225	1
82.27	27	240	1
82.28	28	250	1
82.30	30	260	1
82.32	32	280	1
82.34	34	290	1
82.36	36	320	1
82.38	38	330	1
82.40	40	355	1
82.41	41	350	1
82.42	42	350	1
82.45	45	380	1
82.46	46	380	1
82.50	50	420	1
82.55	55	460	1
82.60	60	500	1
82.65	65	540	1
82.70	70	540	1
82.75	75	580	1

**Art. 89**



UNI ISO DIN

6742 --- 3112

CHIAVE A T FISSA CON ASTA SCORREVOLE E BUSSOLA ESAGONALE LUNGA, IN ACCIAIO AL CROMO VANADIO, FINITURA CROMATA LUCIDA.

TEE WRENCH WITH SLIDING HANDLE AND LONG HEXAGONAL SOCKET WITH OGIVAL PROFILE, IN CHROME VANADIUM STEEL, MIRROR FINISH

Art.	mm	L mm	
89.8	8	220	1
89.9	9	223	1
89.10	10	230	1
89.11	11	233	1
89.12	12	240	1
89.13	13	244	1
89.14	14	250	1
89.17	17	264	1
89.19	19	274	1

**Art. 89.S7**



UNI ISO DIN

6742 --- 3112

SERIE DI 7 CHIAVI A T FISSA CON ASTA SCORREVOLE E BUSSOLA ESAGONALE LUNGA, IN ACCIAIO AL CROMO VANADIO, FINITURA CROMATA LUCIDA, MISURE mm 8,10,12,13,14,17,19.

SET OF 7 TEE WRENCH WITH SLIDING HANDLE AND LONG HEXAGONAL SOCKET WITH OGIVAL PROFILE, IN CHROME VANADIUM STEEL, MIRROR FINISH, 8,10,12,13,14,17,19

Art.	mm	L mm	
89.S7	---	---	1

**Art. 90**



UNI	ISO	DIN
6743	2236	896

CHIAVE A T TIPO ITALIANO CON SNODO CARDANICO A SPINA ELASTICA, FINITURA CROMATA LUCIDA, IN ACCIAIO AL CROMO VANADIO, BUSSOLA PROFONDA CON PROFILO OGIVALE.

HEXAGON SWIVEL TEE HANDLE WRENCH MIRROR FINISH, JOINT WITH ELASTIC PIN, IN CHROME VANADIUM STEEL, TOTALLY MIRROR FINISH, DEEP SOCKET WITH OGV PROFILE

Art.	mm	L mm	
90.7	7	395	1
90.8	8	395	1
90.9	9	395	1
90.10	10	400	1
90.11	11	400	1
90.12	12	400	1
Art.	mm	L mm	
90.13	13	432	1
90.14	14	432	1
90.15	15	450	1
90.16	16	450	1
90.17	17	450	1
90.18	18	450	1
90.19	19	500	1
90.20	20	500	1
90.21	21	500	1
90.22	22	500	1

CON PROFILO OGIVALE, MISURE mm 8, 10, 11, 13, 14, 17, 19.

SET OF 7 HEXAGON SWIVEL TEE HANDLE WRENCH MIRROR FINISH, JOINT WITH ELASTIC PIN, IN CHROME VANADIUM STEEL, TOTALLY MIRROR FINISH, DEEP SOCKET WITH OGV PROFILE, SIZE mm 8,10,11,13,14,17,19

Art.	mm	L mm	
90.S7	---	---	1

**Art. 90.SN7**



UNI	ISO	DIN
6743	2236	896

SERIE SETTE CHIAVI A T TIPO ITALIANO CON SNODO CARDANICO A SPINA ELASTICA, FINITURA CROMATA LUCIDA, IN ACCIAIO AL CROMO VANADIO, A T CON SNODO CARDANICO E BUSSOLA PROFONDA CON PROFILO OGIVALE, MISURE mm 7, 8,10,12,13,14,17.

SET OF 7 HEXAGON SWIVEL TEE HANDLE WRENCH MIRROR FINISH, JOINT WITH ELASTIC PIN, IN CHROME VANADIUM STEEL, TOTALLY MIRROR FINISH, DEEP SOCKET WITH OGV PROFILE, SIZE mm 7, 8,10,12,13,14,17

Art.	mm	L mm	
90.SN7	---	---	1

**Art. 90.S7**



UNI	ISO	DIN
6743	2236	896

SERIE SETTE CHIAVI A T TIPO ITALIANO CON SNODO CARDANICO A SPINA ELASTICA, FINITURA CROMATA LUCIDA, IN ACCIAIO AL CROMO VANADIO, A T CON SNODO CARDANICO E BUSSOLA PROFONDA